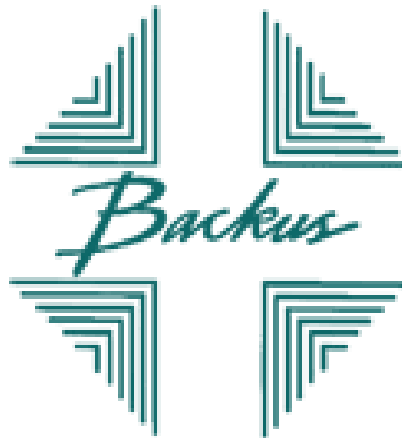


# William W. Backus Hospital

## *Secondary Data Profile*



HOLLERAN

March 2010

# TABLE OF CONTENTS

---

I. Reading the Results.....	3
II. Basic Demographic Statistics.....	4
A. Population Statistics.....	4
B. Household Statistics.....	8
C. Income Statistics.....	12
D. Employment & Education Statistics.....	16
III. Health Status/Indicators .....	21
E. Mortality Statistics-Adults.....	21
F. Mortality Statistics-Children.....	24
G. Cancer Incidence.....	25
H. Infectious/Communicable	26
I. Maternal Health Statistics.....	28
J. Injury & Violence Prevention.....	30
K. Crime Statistics.....	30
L. Mental Health .....	31
M. Environmental Health.....	31
IV. Conclusions.....	32

## **I. Reading the Results**

Various statistics regarding health status, education, mortality, crime, employment, and others have been collected to portray the current status of William W. Backus Hospital service area residents. For all of the data provided, the most recent published data at the county or municipality level were used. For example, if 2008 data are available at the national and state level, but only 2007 data available at the county level, year 2007 data are utilized. The year is noted after each chart and the 2008 population estimates are used for all calculations.

### **Definitions**

**Age-Adjustment-** There are many characteristics that render a crude rate of little use, especially when comparing different populations. Therefore, age-adjusted rates offer a more refined measurement to compare experiences over geographic areas or periods of time.

**Crude Rates-** Generally defined as the total number of events divided by the total population at risk; then multiplied by 1,000, 10,000, or 100,000.

**Incidence Rates-** Rates per 100,000 population for the specified years.

## II. BASIC DEMOGRAPHICS

### A. Population Statistics

#### A1: Population Breakdown (2000)

	United States	Connecticut	WWB Total Service Area	WWB Primary Service Area	WWB Secondary Service Area
<b>POPULATION</b>	281,421,906	3,405,565	254,706	124,823	129,883
<b>GENDER (% of total population)</b>					
Male	49.1%	48.4%	49.7%	49.7%	49.7%
Female	50.9%	51.6%	50.3%	50.3%	50.3%

Data source: U.S. Census Bureau, American Community Survey (2000)

#### A2: Age Breakdown (2000)

Age (% of population)	United States	Connecticut	WWB Total Service Area	WWB Primary Service Area	WWB Secondary Service Area
Under 5 years	6.8%	6.7%	6.5%	6.0%	6.9%
5 - 9 years	7.3%	7.2%	7.3%	7.2%	7.3%
10 - 14 years	7.3%	7.1%	7.3%	7.6%	7.0%
15 - 19 years	7.2%	6.4%	6.8%	6.7%	6.8%
20 - 24 years	6.7%	5.5%	6.3%	5.3%	7.3%
25 - 34 years	14.2%	13.3%	14.0%	13.4%	14.7%
35 - 44 years	16.0%	17.1%	17.5%	18.3%	16.8%
45 - 54 years	13.4%	14.1%	13.5%	14.4%	12.5%
55 - 59 years	4.8%	5.2%	4.8%	5.1%	4.5%
60 - 64 years	3.8%	3.9%	3.6%	3.8%	3.5%
65 - 74 years	6.5%	6.8%	6.3%	6.4%	6.2%
75 - 84 years	4.4%	5.1%	4.5%	4.3%	4.7%
85 years and over	1.5%	1.9%	1.6%	1.4%	1.9%

Data source: U.S. Census Bureau, American Community Survey (2000)

### A3: Disability Statistics (2000)

DISABILITY STATUS OF THE CIVILIAN NONINSTITUTIONALIZED POPULATION	United States		Connecticut	
	Number	% Population 5 years and over	Number	% Population 5 years and over
<b>Population 5 to 20 years</b>				
With a disability	5,214,334	8.1%	56,185	7.6%
<b>Population 21 to 64 years</b>				
With a disability	30,553,796	19.2%	327,697	16.8%
<b>Population 65 years and over</b>				
With a disability	13,978,118	41.9%	162,931	37.0%

Data source: U.S. Census Bureau, American Community Survey (2000)

DISABILITY STATUS OF THE CIVILIAN NONINSTITUTIONALIZED POPULATION	WWB Total Service Area		WWB Primary Service Area		WWB Secondary Service Area	
	Number	% Population 5 years and over	Number	% Population 5 years and over	Number	% Population 5 years and over
<b>Population 5 to 20 years</b>						
With a disability	5,227	9.3%	2,503	8.9%	2,724	9.8%
<b>Population 21 to 64 years</b>						
With a disability	25,732	18.2%	13,317	18.6%	12,415	17.7%
<b>Population 65 years and over</b>						
With a disability	11,724	39.8%	5,896	41.1%	5,828	38.6%

Data source: U.S. Census Bureau, American Community Survey (2000)

#### A4: Racial Breakdown (2000)

	United States	Connecticut	WWB Total Service Area	WWB Primary Service Area	WWB Secondary Service Area
<b>RACE (Race alone or in combination with one or more races)*</b>					
White	77.1%	83.3%	89.4%	91.8%	87.1%
Black/ African American	12.9%	10.0%	6.3%	4.5%	8.0%
Asian	4.2%	2.8%	2.3%	1.8%	2.7%
American Indian/ Alaskan Native	1.5%	0.7%	2.0%	2.3%	1.7%
Native Hawaiian or Other Pacific Islander	0.3%	0.1%	0.2%	0.1%	0.2%
Some other race	6.6%	5.5%	2.9%	2.2%	3.5%
<b>HISPANIC or LATINO RACE</b>					
Hispanic or Latino (of any race)	12.5%	9.4%	5.1%	3.7%	6.5%

Data source: U.S. Census Bureau, American Community Survey (2000)

\*The numbers may add up to more than 100% because the individuals may report more than one race.

#### A5: Place of Birth Breakdown (2000)

PLACE OF BIRTH	United States	Connecticut	WWB Total Service Area	WWB Primary Service Area	WWB Secondary Service Area
<b>Total population</b>	<b>281,421,906</b>	<b>3,405,565</b>	<b>254,706</b>	<b>124,823</b>	<b>129,883</b>
Native	88.9%	89.1%	94.9%	95.6%	94.3%
Born in United States	87.7%	85.8%	92.6%	93.8%	91.5%
State of residence	60.0%	57.0%	57.6%	62.1%	53.3%
Different state	27.7%	28.8%	35.0%	31.6%	38.2%
Born in Puerto Rico, U.S. Island areas, or born abroad to American parent(s)	1.3%	3.3%	2.3%	1.8%	2.8%
Foreign born	11.1%	10.9%	5.1%	4.4%	5.7%

Data Source: U.S. Census Bureau, American Community Survey (2000)

**A6: Language Spoken at Home (2000)**

<b>LANGUAGE SPOKEN AT HOME</b>	<b>United States</b>	<b>Connecticut</b>	<b>WWB Total Service Area</b>	<b>WWB Primary Service Area</b>	<b>WWB Secondary Service Area</b>
<b>Population 5 years and over</b>	<b>262,375,152</b>	<b>3,184,514</b>	<b>238,504</b>	<b>117,561</b>	<b>120,943</b>
English only	82.1%	81.7%	89.8%	91.0%	88.7%
Language other than English	17.9%	18.3%	10.2%	9.0%	11.3%
Speak English less than "very well"	8.1%	7.4%	3.5%	3.1%	3.9%
Spanish	10.7%	8.4%	4.5%	3.4%	5.6%
Speak English less than "very well"	5.2%	3.7%	1.7%	1.3%	2.1%
Other Indo-European languages	3.8%	7.9%	4.1%	4.3%	4.0%
Speak English less than "very well"	1.3%	2.8%	1.2%	1.3%	1.1%
Asian and Pacific Islander languages	2.7%	1.5%	1.2%	1.0%	1.3%
Speak English less than "very well"	1.4%	0.7%	0.5%	0.4%	0.5%

Data Source: U.S. Census Bureau, American Community Survey (2000)

## B: Household Statistics

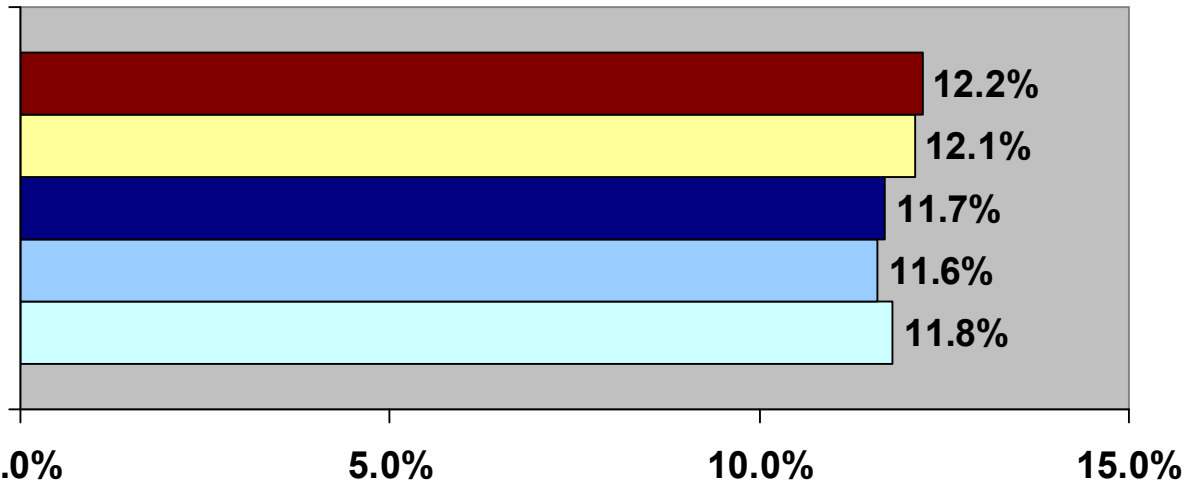
### B1: Household Type Breakdowns (2000)

HOUSEHOLDS BY TYPE	United States	Connecticut	WWB Total Service Area	WWB Primary Service Area	WWB Secondary Service Area
<b>Total households</b>	<b>105,480,101</b>	<b>1,301,670</b>	<b>97,384</b>	<b>47,599</b>	<b>49,785</b>
Family households (families)	68.1%	67.7%	67.5%	69.7%	65.5%
With own children under 18 years	32.8%	32.2%	33.4%	33.9%	32.9%
Married-couple families	51.7%	52.0%	51.6%	53.7%	49.6%
With own children under 18 years	23.5%	23.6%	23.5%	24.1%	22.9%
Female householder, no husband present	12.2%	12.1%	11.7%	11.6%	11.8%
With own children under 18 years	7.2%	7.0%	7.6%	7.3%	7.8%
Non-family households	31.9%	32.3%	32.5%	30.3%	34.5%
Householder living alone	25.8%	26.4%	25.9%	23.8%	28.0%
65 years and over	9.2%	10.1%	9.3%	8.9%	9.7%
Households with one or more people under 18 years	36.0%	34.7%	35.9%	36.6%	35.2%
Households with one or more people 65 years and over	23.4%	25.1%	22.5%	22.4%	22.5%
<b>Average household size</b>	<b>2.59</b>	<b>2.53</b>	<b>2.61</b>	<b>2.64</b>	<b>2.57</b>
<b>Average family size</b>	<b>3.14</b>	<b>3.08</b>	<b>3.04</b>	<b>3.04</b>	<b>3.05</b>

Data source: U.S. Census Bureau, American Community Survey (2000)

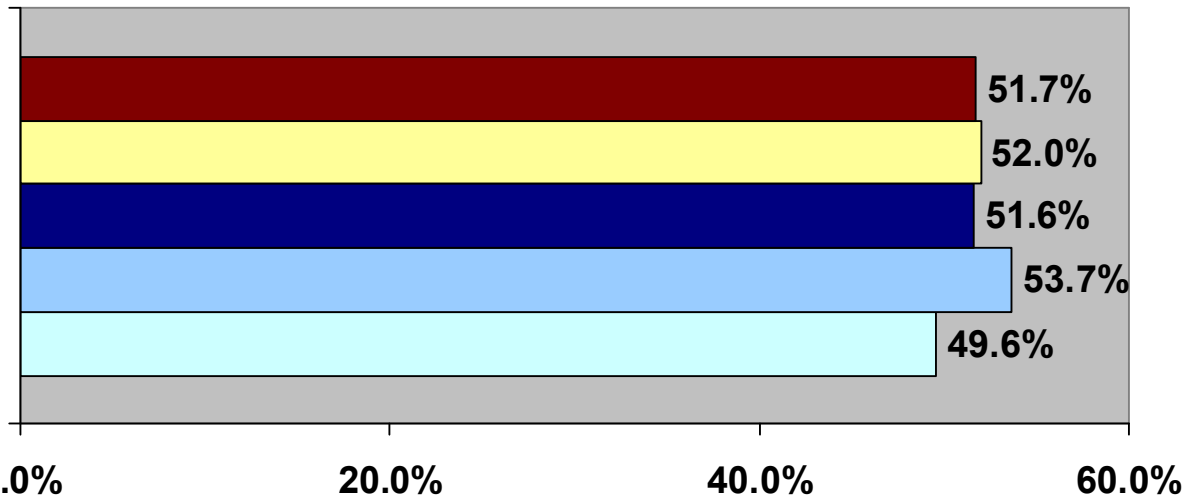
A “nonfamily household” consists of a person living alone or a householder who shares the home with nonrelatives only, for example, boarders or roommates.

**Percentage of Female Households, No Husband Present  
2000**



■ WWB Secondary      ■ WWB Primary      ■ WWB Total  
■ Connecticut      ■ United States

**Percentage of Married Family  
Households 2000**



■ WWB Secondary      ■ WWB Primary      ■ WWB Total  
■ Connecticut      ■ United States

## B2: Housing Occupancy and Selected Characteristics (2000)

<b>HOUSING OCCUPANCY</b>	<b>United States</b>	<b>Connecticut</b>	<b>WWB Total Service Area</b>	<b>WWB Primary Service Area</b>	<b>WWB Secondary Service Area</b>
Total housing units	115,904,641	1,385,975	105,261	51,026	54,235
Occupied housing units	105,480,101	1,301,670	97,384	47,599	49,785
% Total housing units occupied	91.0%	93.9%	92.5%	93.3%	91.8%
<b>HOUSING TENURE</b>					
Owner-occupied	66.2%	66.8%	65.2%	70.0%	60.5%
Renter-occupied	33.8%	33.2%	34.8%	30.0%	39.5%
Average household size of owner-occupied unit	2.69	2.67	2.71	2.73	2.68
Average household size of renter-occupied unit	2.40	2.25	2.26	2.28	2.22
<b>OCCUPANTS PER ROOM</b>					
1.00 or less	94.3%	97.2%	98.0%	98.1%	97.9%
1.01 to 1.50	3.0%	1.8%	1.5%	1.6%	1.4%
1.51 or more	2.7%	1.0%	0.6%	0.4%	0.8%
<b>SELECTED CHARACTERISTICS</b>					
Lacking complete plumbing facilities	0.6%	0.5%	0.3%	0.2%	0.5%
Lacking complete kitchen facilities	0.7%	0.5%	0.4%	0.2%	0.5%
No telephone service available	2.4%	1.1%	0.9%	0.7%	1.1%
<b>HOUSE HEATING FUEL</b>					
Utility gas	51.2%	29.0%	10.4%	11.4%	10.1%
Bottled, tank, or LP gas	6.5%	2.4%	2.9%	2.9%	3.0%
Electricity	30.3%	14.6%	15.8%	12.0%	20.5%
Fuel oil, kerosene, etc.	9.0%	52.4%	60.7%	63.7%	61.5%
Coal or coke	0.1%	0.1%	0.2%	0.2%	0.2%
Wood	1.7%	0.9%	2.0%	2.6%	1.6%
Solar energy	0.0%	0.0%	0.0%	0.0%	0.0%
Other fuel	0.4%	0.4%	0.4%	0.3%	0.4%
No fuel used	0.7%	0.2%	0.2%	0.1%	0.3%

Data Source: U.S. Census Bureau, American Community Survey (2000)

**B3: Marital Status (2000)**

<b>MARITAL STATUS</b>	<b>United States</b>	<b>Connecticut</b>	<b>WWB Total Service Area</b>	<b>WWB Primary Service Area</b>	<b>WWB Secondary Service Area</b>
<b>Population 15 years and over</b>	<b>221,148,671</b>	<b>2,696,250</b>	<b>201,413</b>	<b>99,000</b>	<b>102,413</b>
Never married	27.1%	27.2%	26.1%	25.1%	27.0%
Now married, except separated	54.4%	55.0%	54.6%	55.5%	53.6%
Separated	2.2%	1.6%	1.9%	1.8%	2.0%
Widowed	6.6%	7.0%	6.4%	6.2%	6.5%
Divorced	9.7 %	9.3%	11.1%	11.3%	10.8%

Data Source: U.S. Census Bureau, American Community Survey (2000)

## C. Income Statistics:

### C1: Income Statistics (2000)

<b>INCOME (IN 2000 INFLATION-ADJUSTED DOLLARS)</b>	<b>United States</b>	<b>Connecticut</b>	<b>WWB Total Service Area</b>	<b>WWB Primary Service Area</b>	<b>WWB Secondary Service Area</b>
<b>Total households</b>	<b>105,480,101</b>	<b>1,302,227</b>	<b>97,384</b>	<b>47,599</b>	<b>49,485</b>
Median household income	\$41,994	\$53,935	\$52,637	\$53,523	\$51,197
<b>Families</b>	<b>72,261,780</b>	<b>885,747</b>	<b>65,775</b>	<b>33,171</b>	<b>32,604</b>
Median family income	\$50,046	\$65,521	\$59,775	\$60,933	\$57,894
Per capita income	\$21,587	\$28,766	\$23,010	\$23,064	\$22,923
<b>Median earnings</b>					
Male full-time, year-round workers	\$37,057	\$45,787	\$41,294	\$41,735	\$40,578
Female full-time, year-round workers	\$27,194	\$33,318	\$29,145	\$28,773	\$29,750

Data Source: U.S. Census Bureau, American Community Survey (2000)

<b>Household Income</b>	<b>United States</b>	<b>Connecticut</b>	<b>WWB Total Service Area</b>	<b>WWB Primary Service Area</b>	<b>WWB Secondary Service Area</b>
<b>Total households</b>	<b>105,480,101</b>	<b>1,302,227</b>	<b>97,384</b>	<b>47,599</b>	<b>49,485</b>
Less than \$10,000	9.5%	7.0%	6.6%	6.7%	6.5%
\$10,000 to \$14,999	6.3%	5.0%	5.1%	4.9%	5.2%
\$15,000 to \$24,999	12.8%	9.7%	11.2%	10.7%	11.7%
\$25,000 to \$34,999	12.8%	10.1%	12.2%	11.5%	12.9%
\$35,000 to \$49,999	16.5%	14.4%	17.4%	16.8%	17.9%
\$50,000 to \$74,999	19.5%	20.4%	22.9%	24.4%	21.3%
\$75,000 to \$99,999	10.2%	13.3%	12.6%	13.7%	11.6%
\$100,000 to \$149,999	7.7%	11.7%	8.9%	8.7%	9.2%
\$150,000 to \$199,999	2.2%	3.7%	1.8%	1.5%	2.1%
\$200,000 or more	2.4%	4.7%	1.3%	1.0%	1.6%

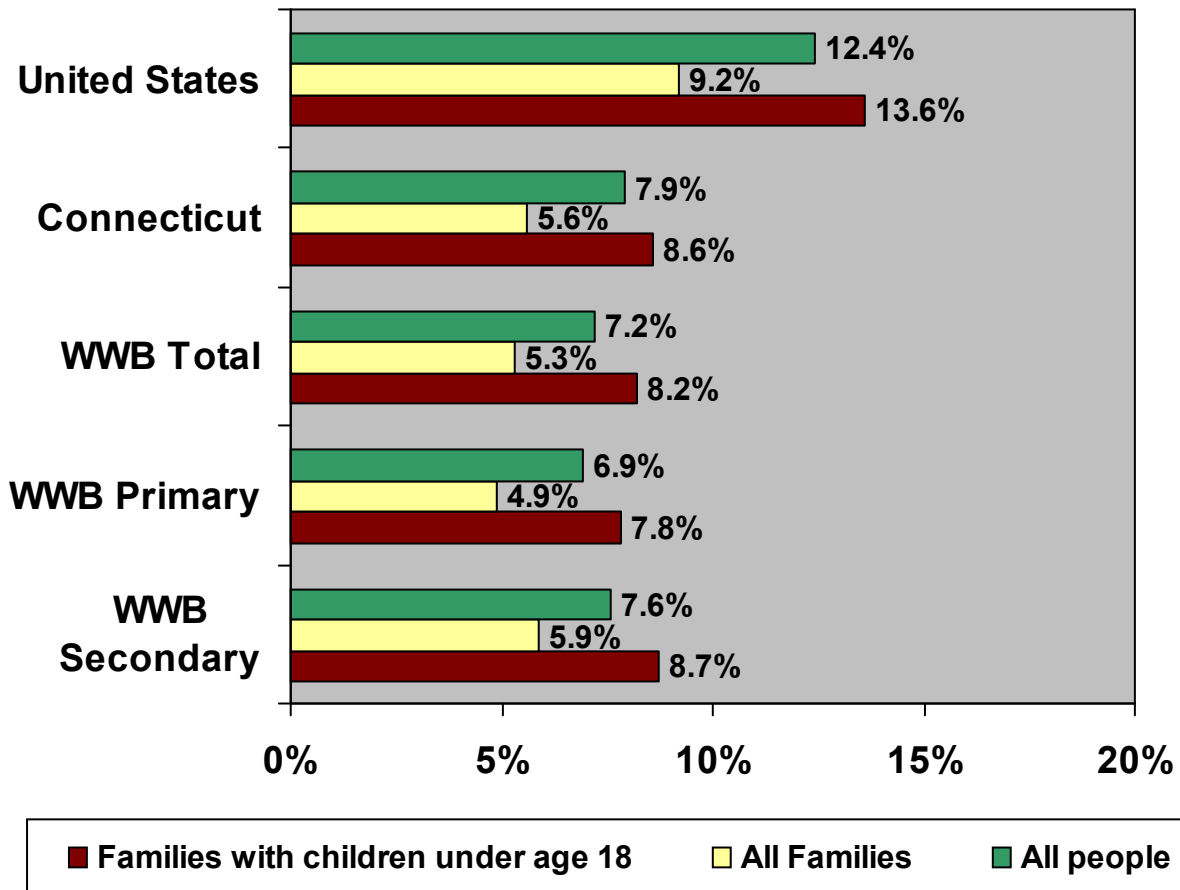
Data Source: U.S. Census Bureau, American Community Survey (2000)

## C2: Poverty Statistics (2000)

PERCENTAGE OF FAMILIES AND PEOPLE WHOSE INCOME IN THE PAST 12 MONTHS IS BELOW THE POVERTY LEVEL	United States	Connecticut	WWB Total Service Area	WWB Primary Service Area	WWB Secondary Service Area
<b>All families</b>	<b>9.2%</b>	<b>5.6%</b>	<b>5.3%</b>	<b>4.9%</b>	<b>5.9%</b>
With related children under 18 years	13.6%	8.6%	8.2%	7.8%	8.7%
With related children under 5 years only	17.0%	10.9%	11.2%	10.2%	12.4%
Families with female householder, no husband present	26.5%	19.6%	16.8%	16.3%	17.4%
With related children under 18 years	34.3%	26.6%	21.8%	21.3%	22.5%
With related children under 5 years only	46.4%	37.2%	37.6%	32.6%	43.6%
<b>All people</b>	<b>12.4%</b>	<b>7.9%</b>	<b>7.2%</b>	<b>6.9%</b>	<b>7.6%</b>
Related children under 18 years	16.1%	10.0%	8.7%	7.9%	9.6%
Related children 5 to 17 years	15.4%	9.6%	7.4%	6.9%	7.9%
18 years and over	12.4%	7.0%	6.6%	6.3%	6.8%
65 years and over	9.9%	7.0%	7.4%	7.7%	7.1%
Unrelated individuals 15 years and over	22.7%	16.8%	15.6%	16.3%	14.8%

Data Source: U.S. Census Bureau, American Community Survey (2000)

## People in Poverty (2000)



### C3: Children receiving Free or Reduced Lunch

	Connecticut	WWB Total Service Area	WWB Primary Service Area	WWB Secondary Service Area
<b>Children Receiving Free or Reduced School Lunch</b>				
2007	28.6%	27.3%	25.8%	28.8%

Data Source: Connecticut Department of Education, (2007)

**C4: Health and Human Services Poverty Guidelines (2006)**

<b>Size of Family Unit</b>	<b>48 Contiguous States and D.C.</b>
1	\$9,800
2	\$13,200
3	\$16,600
4	\$20,000
5	\$23,400
6	\$26,800
7	\$30,200
8	\$33,600
For each additional person add:	\$3,400

**Poverty Guidelines:** is a version of the federal poverty measure. They are issued each year in the *Federal Register* by the Department of Health and Human Services. The guidelines are a simplification of the poverty thresholds for use for administrative purposes (Determining eligibility for certain federal programs).

Source: United States Department of Health and Human Services, 2006

- **Programs using the guidelines (or percentage multiples of the guidelines) in determining eligibility include Head Start, the Food Stamp Program, the National School Lunch Program, the Low-Income Home Energy Assistance Program, and the Children’s Health Insurance Program. Note that in general, cash public assistance programs (Temporary Assistance for Needy Families and Supplemental Security Income) do NOT use the poverty guidelines in determining eligibility. The Earned Income Tax Credit program also does NOT use the poverty guidelines to determine eligibility (United States Department of Health and Human Services, 2006).**

## D. Employment & Education Statistics:

### E1: Employment Status (2000)

Employment Status	United States		Connecticut	
Population 16 years and over	217,168,077		2,652,316	
	Number	Percent	Number	Percent
In labor force	138,820,935	63.9%	1,765,319	66.6%
Civilian labor force	137,668,798	63.4%	1,757,108	66.2%
Employed	129,721,512	59.7%	1,664,440	62.8%
Unemployed	7,947,286	3.7%	92,668	3.5%
Armed Forces	1,152,137	0.5%	8,211	0.3%
Not in labor force	78,347,142	36.1%	886,997	33.4%

Employment Status	WWB Total Service Area		WWB Primary Service Area		WWB Secondary Service Area	
Population 16 years and over	198,023		97,028		100,995	
	Number	Percent	Number	Percent	Number	Percent
In labor force	136,488	68.9%	67,051	69.1%	69,437	68.8%
Civilian labor force	129,752	65.5%	66,079	68.1%	63,673	63.0%
Employed	123,850	62.5%	63,210	65.1%	60,640	60.0%
Unemployed	5,902	3.0%	2,869	3.0%	3,033	3.0%
Armed Forces	6,736	3.4%	972	1.0%	5,764	5.7%
Not in labor force	61,535	31.1%	29,977	30.9%	31,558	31.2%

Data Source: U.S. Census Bureau, American Community Survey (2000)

### D2: Type of Occupation Statistics (2000)

OCCUPATION	United States	Connecticut	WWB Total Service Area	WWB Primary Service Area	WWB Secondary Service Area
Management, professional, and related occupations	33.6%	39.1%	32.0%	30.2%	33.9%
Service occupations	14.9%	14.3%	20.3%	21.3%	19.3%
Sales and office occupations	26.7%	26.5%	24.7%	24.5%	25.0%
Farming, fishing, and forestry occupations	0.7%	0.2%	0.4%	0.5%	0.4%
Construction, extraction, maintenance and repair occupations	9.4%	8.0%	9.3%	10.2%	8.5%
Production, transportation, and material moving occupations	14.6%	12.0%	13.1%	13.3%	12.9%

Data source: U.S. Census Bureau, American Community Survey (2000)

### D3: Type of Industry Statistics (2000)

	United States	Connecticut	WWB Total Service Area	WWB Primary Service Area	WWB Secondary Service Area
Agriculture, forestry, fishing and hunting, and mining	1.9%	0.4%	0.9%	1.2%	0.6%
Construction	6.8%	6.0%	6.4%	6.9%	5.9%
Manufacturing	14.1%	14.8%	15.1%	14.4%	15.7%
Wholesale trade	3.6%	3.2%	2.6%	2.7%	2.4%
Retail trade	11.7%	11.2%	11.7%	11.2%	12.3%
Transportation and warehousing, and utilities	5.2%	3.9%	4.7%	4.7%	4.8%
Information	3.1%	3.3%	1.9%	1.8%	2.1%
Finance and insurance, and real estate and rental and leasing	6.9%	9.8%	4.2%	3.9%	4.5%
Professional, scientific, and management, and administrative and waste management services	9.3%	10.1%	7.1%	6.6%	7.7%
Educational services, and health care, and social assistance	19.9%	22.0%	20.8%	20.0%	21.6%
Arts, entertainment, and recreation, and accommodation, and food services	7.9%	6.7%	15.0%	17.0%	12.9%
Other services, except public administration	4.9%	4.5%	3.9%	3.9%	3.9%
Public administration	4.8%	4.0%	5.6%	5.7%	5.6%

Data Source: U.S. Census Bureau, American Community Survey (2000)

#### D4: Class of Worker Statistics (2000)

CLASS OF WORKER	United States	Connecticut	WWB Total Service Area	WWB Primary Service Area	WWB Secondary Service Area
Private wage and salary workers	78.5%	79.9%	78.9%	78.8%	79.0%
Government workers	14.6%	13.3%	15.5%	15.6%	15.3%
Self-employed workers in own not incorporated business	6.6%	6.5%	5.4%	5.4%	5.5%
Unpaid family workers	0.3%	0.2%	0.2%	0.2%	0.2%

Data Source: U.S. Census Bureau, American Community Survey (2000)

#### D5: Commuting to Work (2000)

COMMUTING TO WORK	United States		Connecticut	
Workers 16 years and over	128,279,228		1,640,823	
	Number	Percent	Number	Percent
Car, truck, or van -- drove alone	97,102,050	75.7%	1,312,700	80.0%
Car, truck, or van -- carpooled	15,634,051	12.2%	154,400	9.4%
Public transportation (excluding taxicab)	6,067,703	4.7%	65,827	4.0%
Walked	3,758,982	2.9%	44,348	2.7%
Other means	1,532,219	1.2%	12,130	0.7%
Worked at home	4,184,223	3.3%	51,418	3.1%
Mean travel time to work (minutes)	25.5		24.4	

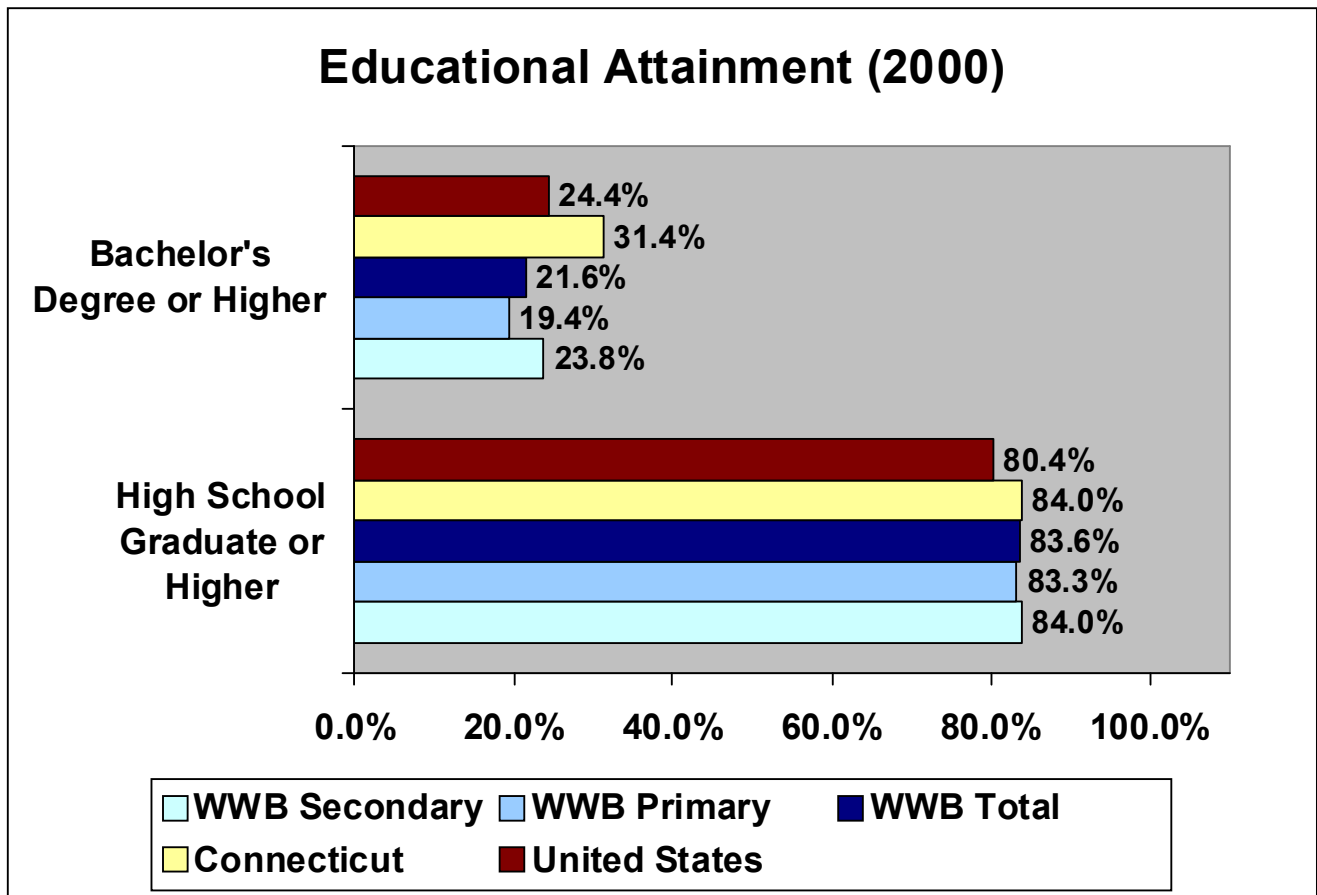
COMMUTING TO WORK	WWB Total Service Area		WWB Primary Service Area		WWB Secondary Service Area	
Workers 16 years and over	128,192		63,010		65,182	
	Number	Percent	Number	Percent	Number	Percent
Car, truck, or van -- drove alone	103,376	80.6%	52,517	83.3%	50,859	78.0%
Car, truck, or van -- carpooled	13,981	10.9%	6,901	11.0%	7,080	10.9%
Public transportation (excluding taxicab)	1,809	1.4%	809	1.3%	1,000	1.5%
Walked	4,861	3.8%	1,124	1.8%	3,737	5.7%
Other means	1,190	0.9%	396	0.6%	794	1.2%
Worked at home	2,975	2.3%	1,263	2.0%	1,712	2.6%
Mean travel time to work (minutes)	25.0		25.8		23.7	

Data Source: U.S. Census Bureau, American Community Survey (2000)

D6: Educational Attainment (2000)

EDUCATIONAL ATTAINMENT	United States	Connecticut	WWB Total Service Area	WWB Primary Service Area	WWB Secondary Service Area
<b>Population 25 years and over</b>	<b>182,211,639</b>	<b>2,295,617</b>	<b>168,004</b>	<b>83,571</b>	<b>84,433</b>
Less than 9th grade	7.5%	5.8%	5.4%	5.5%	5.2%
9th to 12th grade, no diploma	12.1%	10.2%	11.0%	11.2%	10.8%
High school graduate (includes equivalency)	28.6%	28.5%	34.0%	36.1%	32.0%
Some college, no degree	21.0%	17.5%	20.4%	20.4%	20.5%
Associate's degree	6.3%	6.6%	7.5%	7.4%	7.6%
Bachelor's degree	15.5%	18.2%	12.7%	11.5%	13.9%
Graduate or professional degree	8.9%	13.3%	8.9%	8.0%	9.9%
<b>Percent high school graduate or higher</b>	<b>80.4%</b>	<b>84.0%</b>	<b>83.6%</b>	<b>83.3%</b>	<b>84.0%</b>
<b>Percent bachelor's degree or higher</b>	<b>24.4%</b>	<b>31.4%</b>	<b>21.6%</b>	<b>19.4%</b>	<b>23.8%</b>

Data Source: U.S. Census Bureau, American Community Survey (2000)



### D7: School Enrollment (2000)

<b>SCHOOL ENROLLMENT</b>	<b>United States</b>	<b>Connecticut</b>	<b>WWB Total Service Area</b>	<b>WWB Primary Service Area</b>	<b>WWB Secondary Service Area</b>
<b>Population 3 years and over enrolled in school</b>	<b>76,632,927</b>	<b>910,869</b>	<b>66,556</b>	<b>31,959</b>	<b>34,597</b>
Nursery school, preschool	6.5%	7.3%	6.1%	5.2%	7.0%
Kindergarten	5.4%	5.4%	5.9%	6.0%	5.8%
Elementary school (grades 1-8)	43.9%	44.0%	45.4%	47.3%	43.7%
High school (grades 9-12)	21.4%	20.8%	21.8%	25.0%	18.8%
College or graduate school	22.8%	22.4%	20.8%	16.4%	24.8%

Data Source: U.S. Census Bureau, American Community Survey (2000)

### D8: Public School Enrollment by Grade (2007)

	<b>Connecticut</b>	<b>WWB Total Service Area</b>	<b>WWB Primary Service Area</b>	<b>WWB Secondary Service Area</b>
Pre K	2.5%	3.4%	3.8%	2.9%
Half Day K	2.7%	4.2%	4.1%	4.4%
Extended K	0.7%	1.0%	1.9%	0.0%
Full Day K	3.6%	2.0%	1.4%	2.7%
Kindergarten	7.0%	7.2%	7.4%	7.1%
Grade 1	7.4%	8.0%	7.9%	8.1%
Grade 2	7.3%	7.9%	7.8%	8.0%
Grade 3	7.4%	7.8%	7.9%	7.7%
Grade 4	7.4%	8.0%	8.2%	7.8%
Grade 5	7.4%	7.8%	8.0%	7.5%
Grade 6	7.5%	8.3%	8.7%	7.9%
Grade 7	7.5%	8.3%	8.1%	8.4%
Grade 8	7.7%	8.5%	8.9%	7.9%
Grade 9	8.5%	7.1%	6.9%	7.3%
Grade 10	7.8%	6.3%	6.0%	6.7%
Grade 11	7.5%	6.0%	5.5%	6.6%
Grade 12	7.2%	5.5%	5.0%	6.1%

Data Source: Connecticut Department of Education (2007)

## II. HEALTH STATISTICS/INDICATORS

### E. Mortality Statistics

#### E1: Mortality Rates (2005 - 2007)

	United States*	Connecticut	WWB Total Service Area	WWB Primary Service Area	WWB Secondary Service Area
Crude rates per 100,000 population.					
Number of Deaths	2,424,059	86,970	6,262	3,050	3,212
Crude Rate	803.7	826.4	828.0	833.2	821.7

Data Sources: Connecticut Department of Public Health

U.S. Department of Health and Human Services National Vital Statistics System

\*United States data is from 2007

#### E2: Top Ten Causes of Death (2005 - 2007)

	United States*	Connecticut	WWB Total Service Area	WWB Primary Service Area	WWB Secondary Service Area
These are the top 10 leading causes of death in the United States and Connecticut, in ranking order of the United States.					
Heart Disease	25.4%	25.6%	25.1%	24.3%	26.2%
Cancer (Malignant Neoplasms)	23.1%	23.8%	24.1%	25.1%	22.9%
Stroke	5.5%	5.2%	5.1%	10.1%	4.8%
Chronic Lower Respiratory Diseases	5.3%	10.5%	6.8%	6.5%	7.1%
Accidents (Unintentional Injuries)	4.8%	4.2%	4.7%	5.0%	4.4%
Diabetes	3.1%	2.6%	2.7%	3.0%	2.2%
Alzheimer's Disease	2.9%	2.6%	2.4%	1.6%	3.4%
Influenza/Pneumonia	2.2%	2.9%	2.4%	2.2%	2.5%
Nephritis, Nephrotic Syndrome, and Nephrosis (Kidney Disease)	1.9%	1.9%	2.5%	2.9%	1.9%
Septicemia	1.4%	2.1%	1.7%	1.8%	1.7%

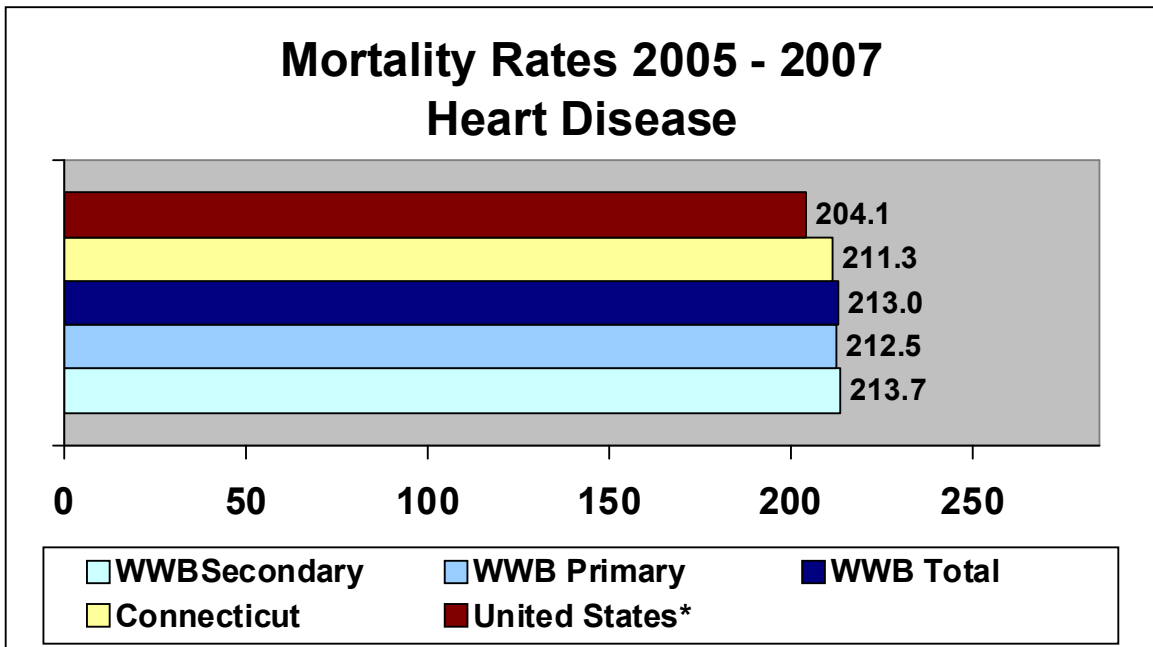
Note: Percentages do not add up to 100% as only top ten causes of death are reported.

Data Sources: Connecticut Department of Public Health and

U.S. Department of Health and Human Services, National Vital Statistics System

\*United States data is from 2007

E3: Mortality Rates - Heart Diseases (2005 - 2007)

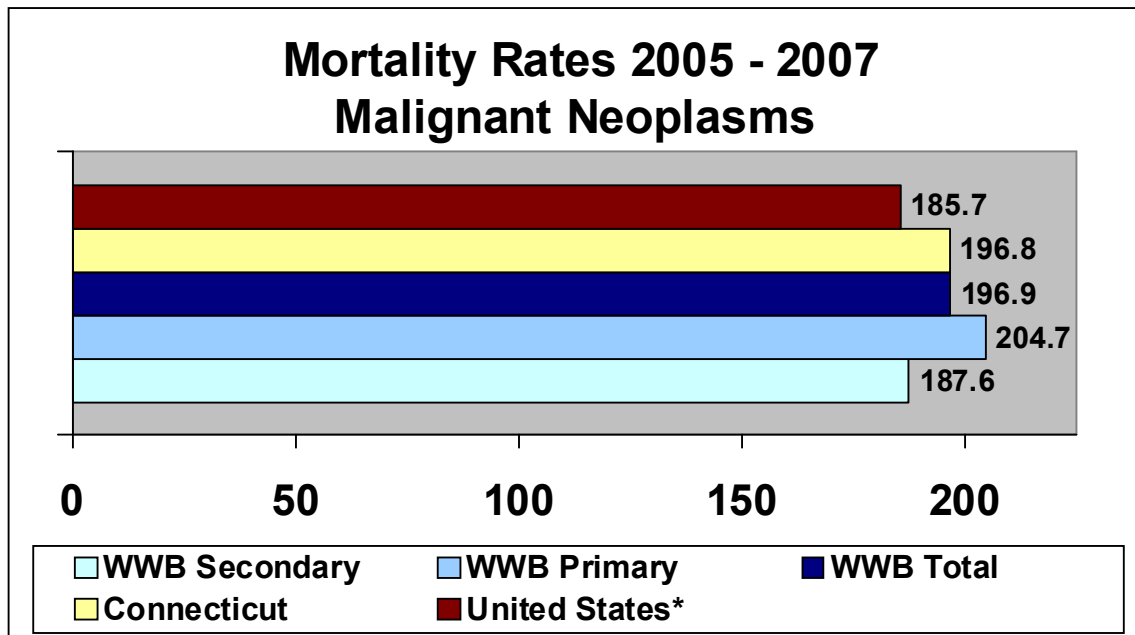


*Per 100,000*

Data Sources: Connecticut Department of Public Health & U.S. Department of Health and Human Services, National Vital Statistics System

\*United States data is from 2007

E4: Mortality Rates - Malignant Neoplasms (2005 - 2007)

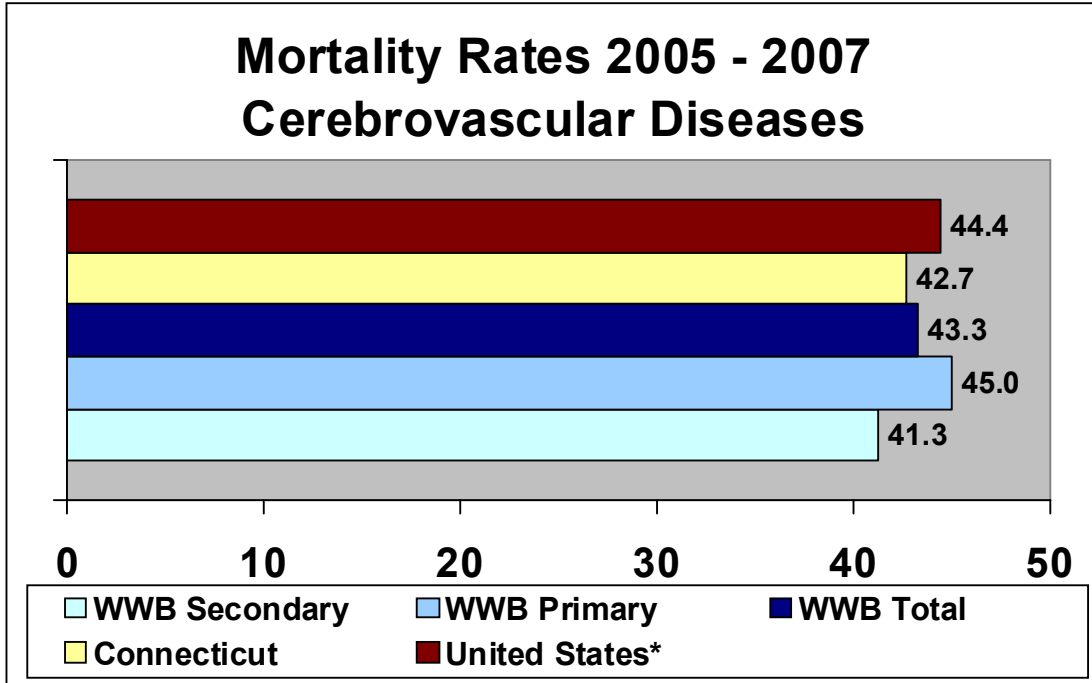


*Per 100,000*

Data Sources: Connecticut Department of Public Health & U.S. Department of Health and Human Services, National Vital Statistics System

\*United States data is from 2007

E5: Mortality Rates - Cerebrovascular Diseases (2005 - 2007)

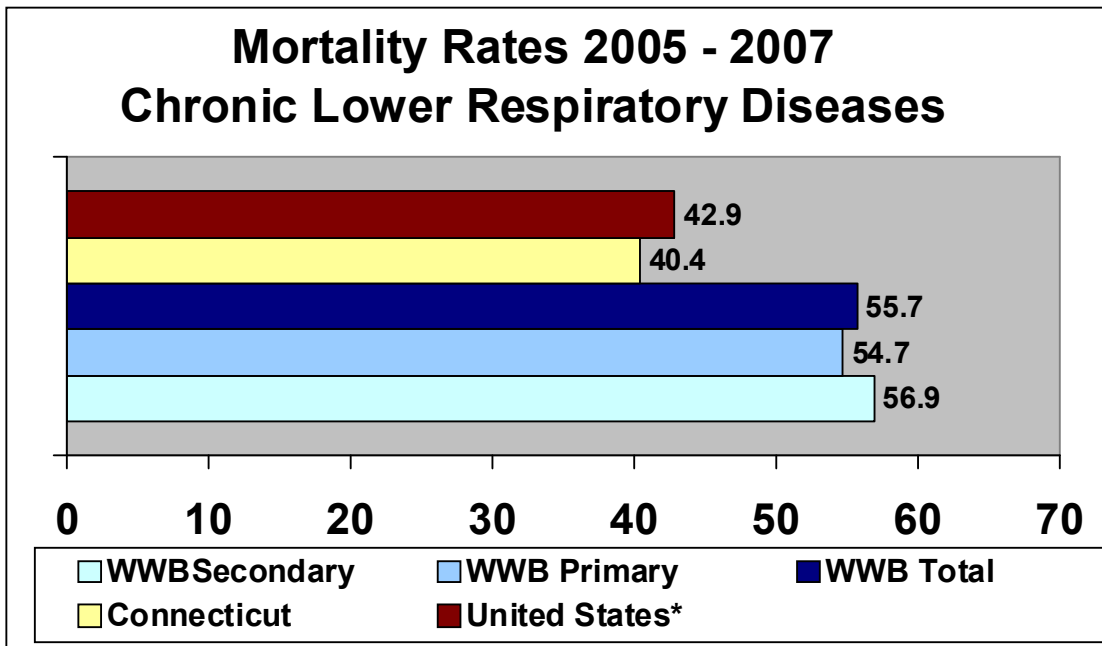


*Per 100,000*

Data Sources: Connecticut Department of Public Health & U.S. Department of Health and Human Services, National Vital Statistics System

\*United States data is from 2007

E6: Mortality Rates - Chronic Lower Respiratory Diseases (2005 - 2007)



*Per 100,000*

Data Sources: Connecticut Department of Public Health & U.S. Department of Health and Human Services, National Vital Statistics System

\*United States data is from 2007

## **F. Mortality Statistics-Children:**

### **F1: Infant, Neonatal, Postneonatal, Fetal, and Perinatal Mortality (2006)**

<b>Infant Mortality (2006)</b>	<b>Connecticut</b>	<b>WWB Total Service Area</b>	<b>WWB Primary Service Area</b>	<b>WWB Secondary Service Area</b>
Infant	257	24	10	14
Neonatal	197	17	8	9
Postneonatal	60	7	2	5
Fetal	232	16	6	10

Data Source: Connecticut Department of Public Health

## G. Cancer Incidence:

### G1: Cancer Incidence (2003)

Crude Rates per 100,000	United States	Connecticut	WWB Total Service Area	WWB Primary Service Area	WWB Secondary Service Area
All Sites	474.1	529.0	445.0	397.9	502.3
Lung	69.8	72.3	72.2	65.2	80.7
Melanoma of the Skin	17.1	23.2	20.4	18.0	23.4
Prostate	139.3	75.7	55.8	47.8	65.6
Breast, Female	129.6	75.2	62.7	50.3	77.7
Colon/Rectum	52.3	59.0	44.9	39.7	51.3

Data Source: Connecticut Department of Public Health, CDC Wonder, United States Cancer Statistics, 1999-2004 Incidence Archive Results

### G2: Pediatric Cancer Incidence (2000 - 2005)

Crude Rates per 100,000, ages 0 - 19 years	Connecticut	WWB Total Service Area	WWB Primary Service Area	WWB Secondary Service Area
Males	19.6	18.6	18.4	18.8
Females	16.5	17.2	15.3	19.5
Males - Leukemia	4.9	6.7	5.3	8.3
Females - Leukemia	3.9	2.9	2.4	3.6

Data Source: Connecticut Department of Public Health

## H. Infectious/Communicable Diseases & Immunizations:

### H1: Lyme Disease

Lyme Disease (2008)	Connecticut	WWB Total Service Area	WWB Primary Service Area	WWB Secondary Service Area
2008 total cases	3,896	324	198	126
2008 rates per 100,000	114.0	130.1	157.1	97.4

Data Source: Connecticut Department of Public Health

### H2: HIV/AIDS

HIV/AIDS (2009)	Connecticut	WWB Total Service Area	WWB Primary Service Area	WWB Secondary Service Area
2009 total cases	538	24	11	13

Data Source: Connecticut Department of Public Health

### H3:Chlamydia

Chlamydia (2007)	Connecticut	WWB Total Service Area	WWB Primary Service Area	WWB Secondary Service Area
2007 total cases	11,512	705	354	351

Data Source: Connecticut Department of Public Health

### H4: Gonorrhea

Gonorrhea (2007)	Connecticut	WWB Total Service Area	WWB Primary Service Area	WWB Secondary Service Area
2007 total cases	2,332	131	60	71

Data Source: Connecticut Department of Public Health

### H5: Syphilis

Syphilis (2007)	Connecticut	WWB Total Service Area	WWB Primary Service Area	WWB Secondary Service Area
2007 total cases	39	1	0	1

Data Source: Connecticut Department of Public Health

**H6: Tuberculosis**

<b>Tuberculosis (2007)</b>	<b>Connecticut</b>	<b>WWB Total Service Area</b>	<b>WWB Primary Service Area</b>	<b>WWB Secondary Service Area</b>
2007 total cases	98	10	4	6

Data Source: Connecticut Department of Public Health

**H7: Hepatitis**

<b>Hepatitis (2008)</b>	<b>Connecticut</b>	<b>WWB Total Service Area</b>	<b>WWB Primary Service Area</b>	<b>WWB Secondary Service Area</b>
<b>Total Cases</b>				
Hepatitis A	26	5	2	3
Acute Hepatitis B	30	3	2	1
Chronic Hepatitis B	497	53	34	19
Acute Hepatitis C	19	1	1	0
Chronic Hepatitis C	2,451	232	118	114

Data Source: Connecticut Department of Public Health

## I. Maternal Health Statistics:

### I1: Birth Statistics (2006)

	Connecticut	WWB Total Service Area	WWB Primary Service Area	WWB Secondary Service Area
Number Of Live Births	41,789	3,253	1,524	1,729
Birth Rate*	11.9	12.5	12.1	13.0

\* Rate per 1,000 Population.

Data Source: Connecticut Department of Public Health

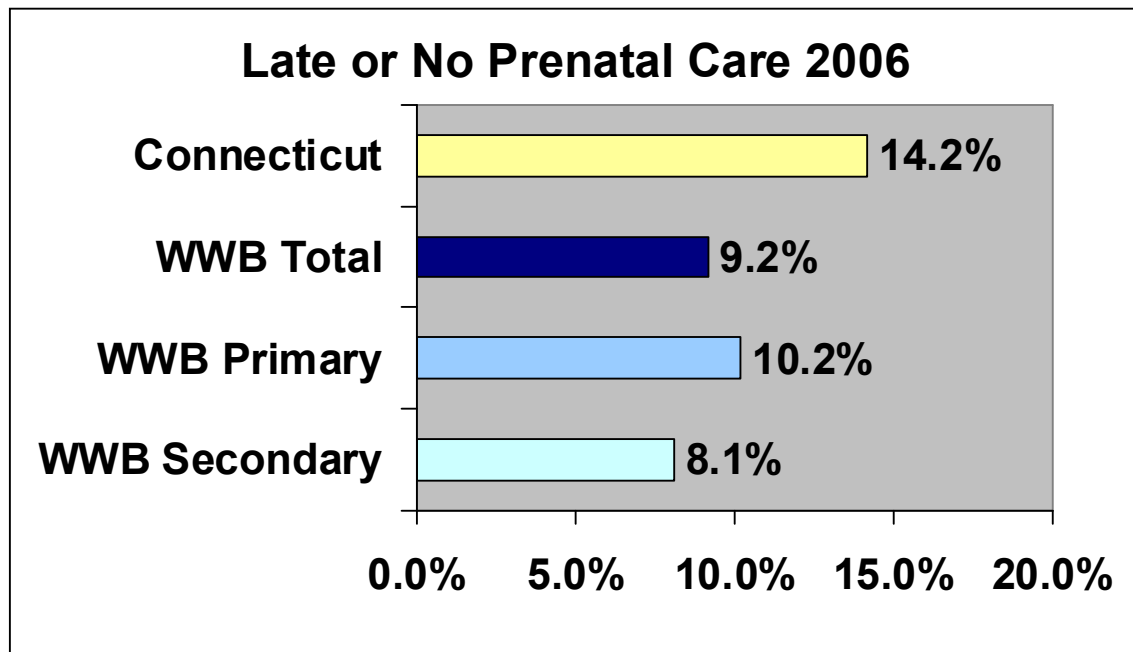
### I2: Prenatal Care (2006)

Prenatal Care Adequacy	Connecticut	WWB Total Service Area	WWB Primary Service Area	WWB Secondary Service Area
Intensive	37.1%	38.3%	41.2%	34.7%
Adequate	43.1%	50.0%	47.7%	52.8%
Non-Adequate*	19.8%	11.3%	10.6%	12.2%

Data Source: Connecticut Department of Public Health

Non-adequate prenatal care comprises intermediate and inadequate prenatal care based on the Adequacy of Prenatal Care Utilization (APNCU) Index.

### I3: Late or No Prenatal Care



Data Source: Connecticut Department of Public Health

**Low Birth Weight:** A weight less than 5 pounds 3 ounces (2,500 grams).

**Very Low Birth Weight:** A weight less than 3 pounds 5 ounces (1,500 grams)

**I4: Low & Very Low Birth Weights (2006)**

Percent of all live births	Connecticut	WWB Total Service Area	WWB Primary Service Area	WWB Secondary Service Area
Low Birth Weight	8.2%	6.5%	5.6%	7.6%
Very Low Birth Weight	1.7%	*	*	*

Data Source: Connecticut Department of Public Health

\*Too few events to be reported.

## J. Injury and Violence Prevention

### J1: Family Violence - Year Comparisons

Total offenses involving Family Violence	Connecticut	WWB Total Service Area	WWB Primary Service Area	WWB Secondary Service Area
2008	20,079	454	233	221
2007	20,042	480	262	218
% Change between '08-'07	0.2%	-5.5%	-10.1%	1.4%

Data Source: Connecticut Department of Public Safety - Uniform Crime Report

## K. Crime Statistics:

### K1: Total Offenses - All Ages (2006)

	Connecticut	WWB Total Service Area	WWB Primary Service Area	WWB Secondary Service Area
Murder	0.1%	0.1%	0.1%	0.2%
Rape	0.7%	1.4%	1.3%	1.6%
Robbery	4.4%	2.8%	2.9%	2.7%
Aggravated Assault	5.2%	5.3%	5.6%	5.0%
Burglary	15.4%	19.6%	19.3%	18.2%
Larceny-Theft	64.1%	62.7%	58.9%	64.5%
Motor Vehicle Theft	10.2%	7.9%	7.2%	7.8%

Data Source: Connecticut Department of Public Safety - Uniform Crime Report

## **L. Mental Health:**

### **L1: Suicide (2005 - 2007)**

	<b>Connecticut</b>	<b>WWB Total Service Area</b>	<b>WWB Primary Service Area</b>	<b>WWB Secondary Service Area</b>
Number of deaths due to Suicide in 2005 - 2007	813	60	36	24
Percentage among 2005 - 2007 deaths	0.9%	1.0%	1.2%	0.8%

Data Source: Connecticut Department of Public Health

## **M. Environmental Health:**

### **M1: Asthma Emergency Department Visits (2000 - 2004)**

<b>Rates per 10,000</b>	<b>WWB Total Service Area</b>	<b>WWB Primary Service Area</b>	<b>WWB Secondary Service Area</b>
Adults 18 years and over	94.1	78.2	113.4
Children 0 - 17 years old	92.3	79.2	108.2

Data Source: Connecticut Department of Public Health

### **M2: Childhood Lead (2006 - 2007)**

	<b>Connecticut</b>	<b>WWB Total Service Area</b>	<b>WWB Primary Service Area</b>	<b>WWB Secondary Service Area</b>
Percentage of children screened in 2006	25.7%	28.3%	29.6%	26.6%
Percentage of children with ug/dL greater than or equal to 10	1.4%	1.0%	1.1%	0.8%

Data Source: Connecticut Department of Public Health

The Centers for Disease Control and Prevention considers a blood lead level of 10 ug/dL or higher in children a cause for concern.

## **IV. Conclusions**

The following conclusions are based on both comparisons to the Connecticut and National data. Areas where the William W. Backus Service Area fares “worse” than Connecticut and/or the nation are termed “opportunities.” Areas where the William W. Backus Service Area fares “better” than Connecticut and/or the nation are termed “strengths.” The strengths and opportunities listed below are not intended to be an exclusive list, as some data points are open to debate as to whether they are a strength or opportunity. For example, a higher percentage of arrests for a particular crime could either mean that a particular crime is occurring more or that law enforcement is doing a better job of cracking down on that type of illegal behavior. These areas are listed as areas of difference, as it is not clear whether they are a strength or opportunity. In addition, areas where the Primary and Secondary Service Areas differ greatly are noted.

## *Areas of Strength*

- ***Income*** - Income for the William W. Backus Service Area exceeds that of the Nation in all categories.
- ***Poverty*** - Poverty rates are lower for all families, all people and families with children under age 18 for the William W. Backus Service Area than in the Nation.
- ***Educational Attainment*** - 83.6% of the population age 25 and over have a high school degree (or higher education). This is compared to 80.4% for the Nation.
- ***Cancer Incidence*** - The cancer incidence rate (445.0) is lower for The William W. Backus Service Area than for Connecticut (529.0) or the Nation (474.1).
- ***Prenatal Care*** - The percentage of women receiving Non-Adequate prenatal care is lower in the William W. Backus Service Area (11.3%) than Connecticut (19.8%).

## Areas of Opportunity

- **Crude death rate** - The crude death rate for the William W. Backus Service Area (828.0) is higher than the National comparison (803.7).
- **Chronic Lower Respiratory Diseases (CLRD) Mortality Rate** - The mortality rate for CLRD is 55.7 in the William W. Backus Service Area. This is higher than the National (42.9) and Connecticut (40.4).
- **Heart Disease Mortality Rate** - The mortality rate for Heart Disease is 213.0 in the William W. Backus Service Area. This is higher than the National (204.1) comparison.
- **Malignant Neoplasm Mortality Rate** - The mortality rate for Malignant Neoplasms is 196.9 in the William W. Backus Service Area. This is higher than the National (185.7) comparison.
- **Lyme Disease** - The rate of Lyme Disease is 130.1 in the William W. Backus Service Area is higher than in Connecticut (114.0).

## *Areas of Difference*

- ***Hispanic Population*** - Only 5.1% of the William W. Backus Service Area residents are Hispanic or Latino (of any race). This is lower than Connecticut (9.4%) and National (12.5%) comparisons.
- ***Foreign Born*** - 5.1% of the William W. Backus Service Area residents are foreign born. This is lower than Connecticut (10.9%) and National (11.1%) comparisons.
- ***Language*** - 89.8% of the William W. Backus Service Area residents speak English only at home, which is higher than Connecticut (81.7%) and National (82.1%) comparisons.

## *Areas of Difference between Primary and Secondary Service Areas*

- ***Mortality Rate, Cerebrovascular Disease*** - The mortality rate for cerebrovascular disease is 45.0 for the Primary Service Area while it is 41.3 for the Secondary.
- ***Cancer Incidence***- Cancer incidence is lower in all categories for the Primary Service Area than the Secondary.
- ***Lyme Disease*** - Lyme Disease rates are higher in the Primary Service Area (157.1) than the Secondary (97.4).
- ***Prenatal Care*** - More in the Primary Service Area receive Intensive prenatal care than in the Secondary Service Area.
- ***Family Violence Offenses*** - Family Violence offenses have decreased by 10.1% in the Primary Service Area while in the Secondary Service Area they have increased 1.4%.
- ***Asthma*** - Emergency Department visits for the Primary Service Area are lower for adults and children than in the Secondary Service Area.